



## ALPHA-S setup instructions

**A. Water tank**

**B. Water base cross bars**

**C. Water tank cover**

**D. Water tank stopper**

**E. Adjustable upright poles**

**F. Top cross member**

**G. Poles that slide in to banner pockets**

**H. Stoppers slide on to end of poles (G)**

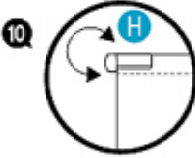
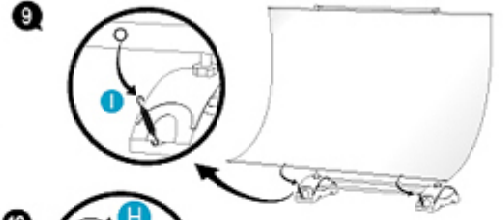
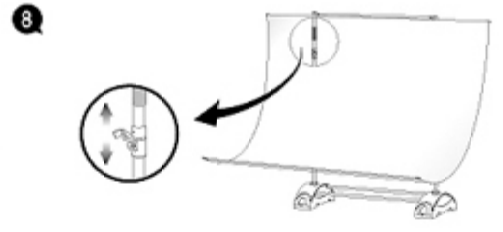
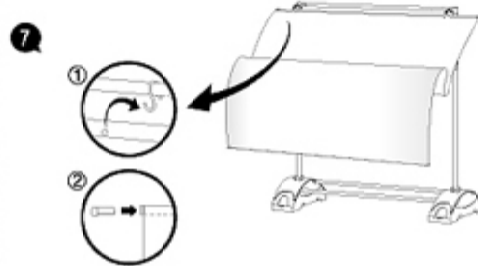
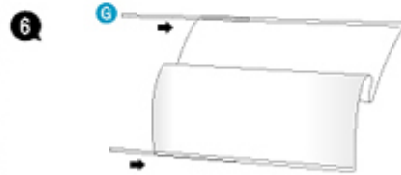
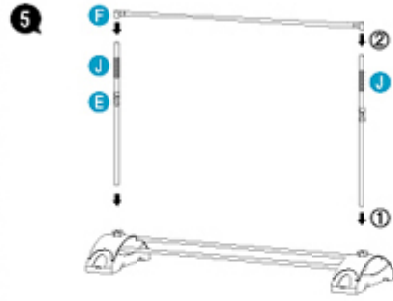
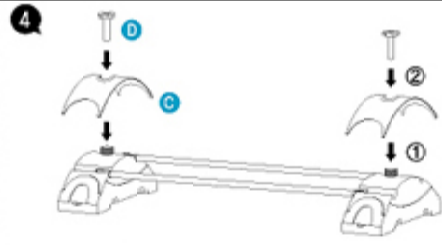
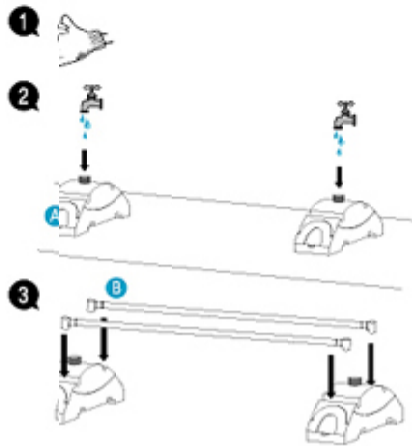
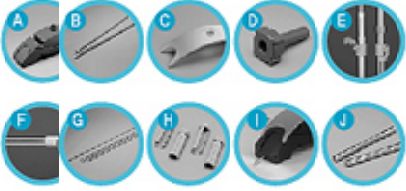
**I. Spring to fix banner**

**J. Springs to tension banner**

1. Position water bases and and unscrew water tank stopper
2. Remove grey water tank cover and pour water into two water tanks. (In winter, please add anti-freezing solution or put sands instead of water)
3. Insert two cross members into both water bases(B) into the sockets in the water tanks.
4. Replace Water tank cover(C) and then screw water tank stopper back in.
5. Insert uprights(E) into water tanks and attach springs (J) into the top of the uprights (E), next attach top cross bar(F)
6. Slide sectional cross bars into pockets on banner. Attach plastic stoppers to end of these poles
7. Use eyelets and hooks to attach banner to upper cross bar (F).
8. Adjust height by lifting up the lever on the uprights(E).
9. Bottom of banner attaches to the water bases using a spring. The spring is attached to the water base then loops through an eyelet in your banner(I). There is a spring for each water base.
10. Inspect overall settings and balance of the banner.
11. For outdoor use it is recommended to put additional watertanks on lower body.

The banner for Alpha-S should have a pocket in the top and bottom edge. The pocket needs to be large enough to take the sectional cross poles which are 30mm dia. The banner also requires four eyelets.

Exple



11. For Outdoor

